



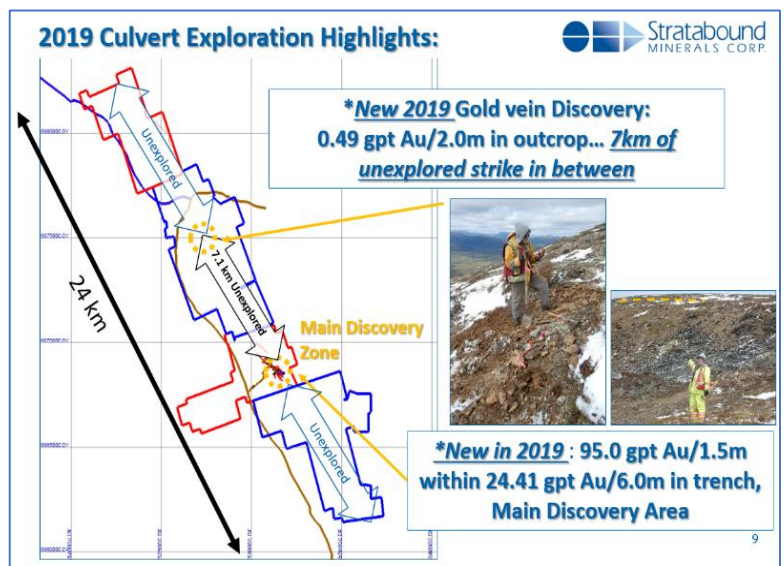
Stratabound
MINERALS CORP.

Exploration & Development in the Golden Culvert, Yukon Territory

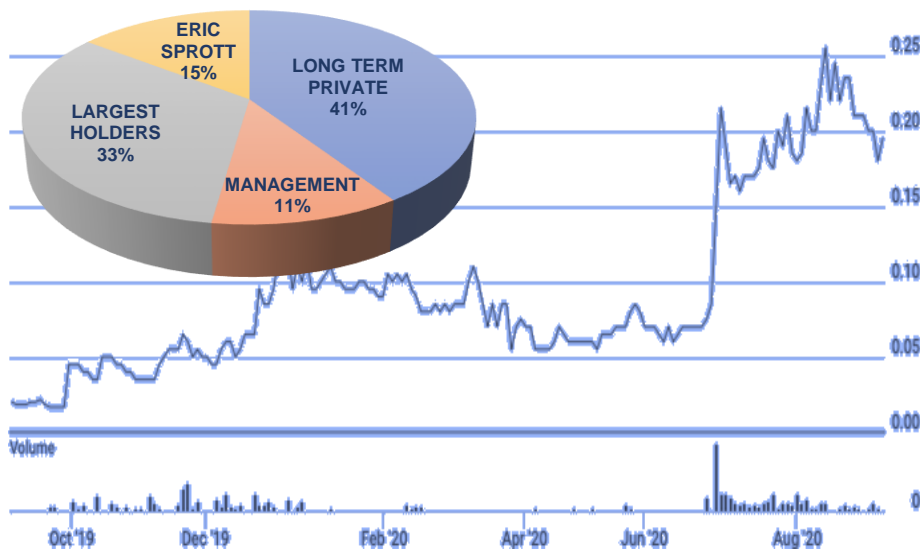
TSX-V:SB
www.stratabound.com

VALUE PROPOSITION, RAISING OF FUNDS

- Strong Management team with proven track record
- Strengthening capital structure
- Excellent location, permitting, infrastructure:
 - Central Culvert group of claims has 10-year Class 3 Land Use Permit allowing camp, access roads, trenching, diamond drilling.
 - All-season Nahanni Range (Cantung) Road provides direct access to camp.
 - 20 km north of Seabridge's high-grade 3 Aces project.
- Relationships with First Nations progressing well
- Deposit has multiple gold bearing quartz vein and breccia structural corridor, continuous over more than 500m encountering gold all trenching and drill hole intersections to date
- NI 43-101 Technical Report -Feb.12, 2018
- Currently raising up to \$5M, \$2M F-T via private placement, 2nd tranche to be closed
 - 1st Tranche - \$1.2M @ 1 share + ½ warrant. Whole warrant = \$0.30
- Proceeds: exploration expenses, related holding costs for exploration properties, and general corporate working capital.



CAPITAL STRUCTURE & INFORMATION

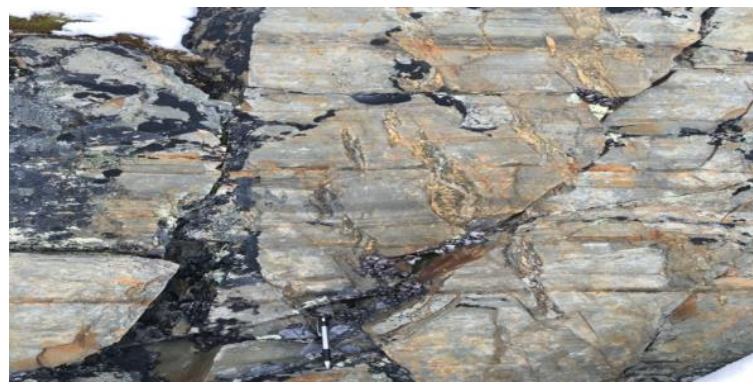


As of Sept 1, 2020

Shares O/S	54.3M
Warrants	7.3M
Options	4.4M
Fully Diluted	66M
Market Cap	~\$11.9M
Share Price	\$0.22
Treasury	\$1.5M

MANAGEMENT & DIRECTORS

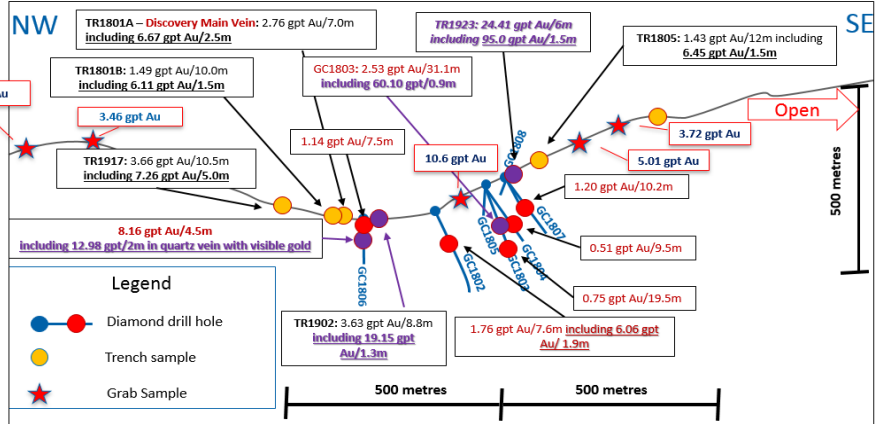
R. Kim Tyler, P.Geo, B.Sc., *Pres., & CEO, Director*
 Terrence H. Byberg, *EVP, Interim Chairman*
 Christina Wu, CPA, CGA, *CFO*
 Hashim Ahmed, CA, *Director*
 R M (Mike) Robb, P.E., *Director*
 Gary Nassif, P.Geo, M.Sc., *Director*
 Jonathan Hill, Fellow of AUSIMM, B.Sc. (Hons), *Director*



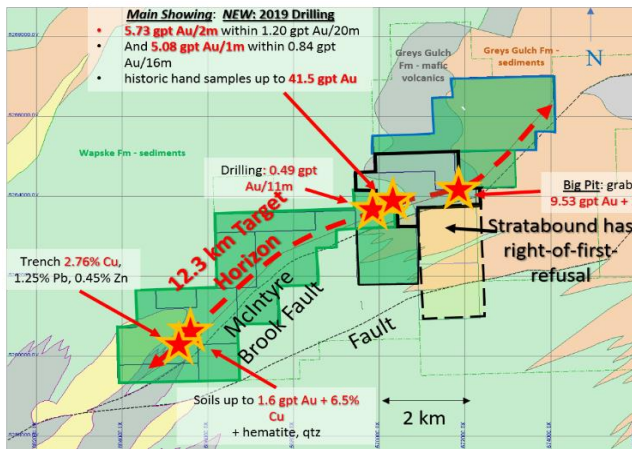
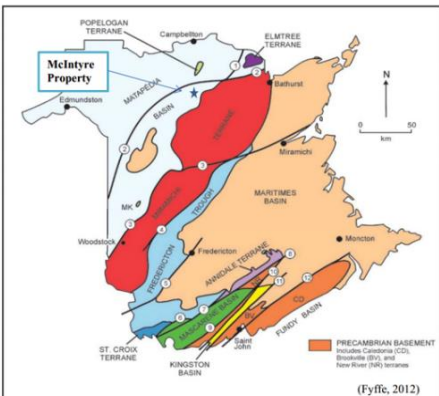
Exploration & Development in the Golden Culvert, Yukon Territory

2019 DRILL PROGRAM

- Trenching values up to **95.0 gpt Au/1.5m** within **24.41 gpt Au/5.0m** at surface plus new gold vein discovery 7km north along strike
- Eight holes drilled in 2018 inaugural drilling program (1,350m)
- Drill hole GC1803 - **2.53 gpt Au/33.1m** between **111.5m-144.6m**. Includes **60.1 gpt Au/0.9m** quartz vein, (down hole, not true width)
- Centred within a northerly trending, **3-km-long by 250m-wide, +30 ppb Au up to 791 ppb Au**, gold-in-soil anomaly that remains open at N-W strike

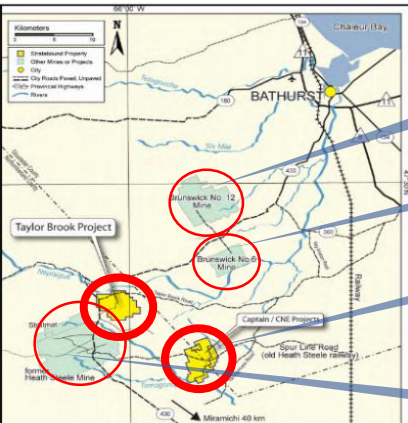


McINTYRE BROOK GOLD PROJECT – ACQUIRED 2019

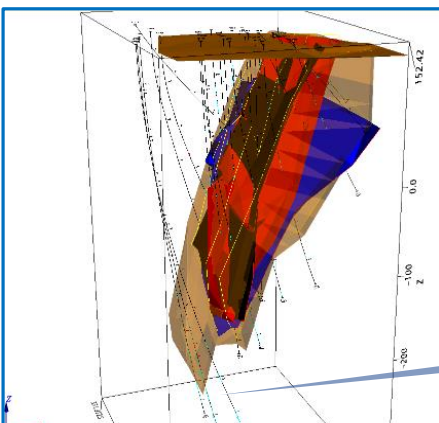


- Rock, trench sampling up to 41.57 gpt gold in new iron oxide-Cu-Au (IOCG) type setting.
- 40 significant Au values between 0.20 – 41.56 gpt Au** out of 46 grab samples collected from bedrock exposed in trenches along 300 m of strike length.
- Zones open at both ends and occur within a 480-metre-wide, 8 to 165 ppb gold-in-soil anomaly that also remains open beyond 500 metres of strike length.

CAPTAIN Cu-Co-Au VMS DEPOSIT – NEW BRUNSWICK



- Glenore Brunswick No.12 Mine
- Glenore Brunswick No.6 Mine
- Stratabound Captain CNE Deposits
- Heath Steele



NI 43-101 M&I Resource Dec. 8, 2010
 23M lbs Cu (1.03%)
 1.1M lbs of Co (0.051%)

Inferred Resource
 13.5M lbs Cu
 0.8M lbs Co

Open at depth